



THE COMPASS CHRONICLE

THE OFFICIAL NEWSLETTER FOR USF ST. PETERSBURG CAMPUS
FAMILY MEMBERS AND FRIENDS

Welcome to the USF Family!

Your student is about to start college - you did it! We know that student success is a team effort, and we are so grateful for all the ways you've supported your student to bring them to this point. Even though this next chapter may look a little different, they'll still need your support!

We are thrilled to welcome you and your student to the USF community. After over a year of virtual learning, we can't wait to be together on our beautiful campus. The Compass Student Experience Office is here for whatever you might need as your student transitions to college - don't hesitate to reach out!

As always, **GO BULLS!**
The Compass Student Experience Team



Peer Coach Reveal


We hope your student will join us for one of our very favorite events of the whole year, **Peer Coach Reveal!** Their Peer Coach will be their go-to person for all their USF questions, and the Peer Coaches are so excited

to meet your student. It's a great chance for them to connect with their classmates, too!

If they are attending classes in person, they can join us in USC Ballroom 1 this Saturday, 6/26, from 3:00 PM to 4:00 PM. Stick around after for the Welcome Mixer and Pride Fest!

If they are attending classes virtually, they can join us on [Teams](#) this Sunday, 6/27, from 4:00 to 5:00 PM to find out who their Peer Coach is!

Remind them to check their email for more information!

A graphic for the Summer Week of Welcome (WOW) event. It features a central green circle with the text "Summer week of welcome WOW" in blue and green. Below this, a blue banner says "June 28th - July 4th" and a green banner says "usf.edu/wow". The graphic is decorated with green leaves and three circular inset photos: a building, a fountain, and a statue.

Week of Welcome

There are several Week of Welcome (WOW) signature events for all students to enjoy. We can't wait to see your student there! There are a ton of events from offices across the USF St. Petersburg campus. Make sure to check them out!

*Virtual events?
How does this work?*

Under the virtual events on the WOW website there will be a link, or it will direct you to the platform where the event will be hosted. Make sure to follow all the social media accounts for the different offices to stay posted on what's happening!

[CLICK HERE TO CHECK OUT ALL THE EVENTS](#)

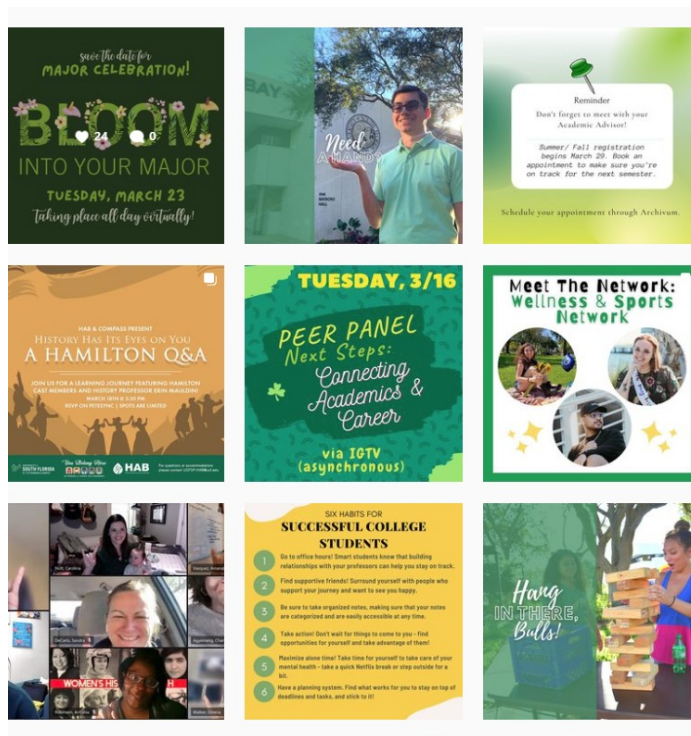
Worried about your student sliding into a slump over the summer?

Ensure your student's success in college with the following tips:

- Students can align summer jobs with their future career plans (e.g., an education major working at a summer camp or a biology major working in a local doctor's office).
- If your student has not declared a major or is uncertain about career options, summer is an opportunity to try a few volunteer opportunities that align with career/major paths they are curious about.
- Make sure your student has registered for fall classes, completed

requirements for financial aid to cover tuition, and confirmed housing arrangements.

Contact usfsp-studentsuccessadvocacy@usf.edu with any questions!

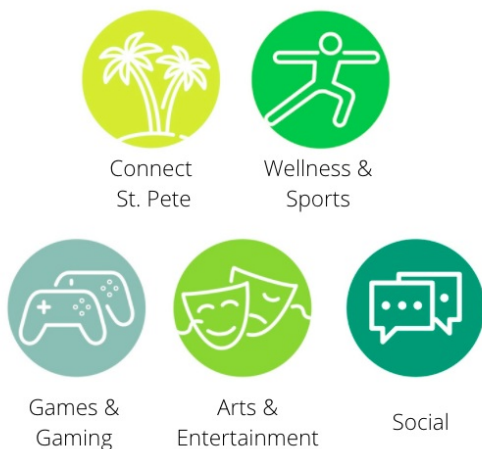


Follow Us on Social Media for Updates!

Follow us on Facebook:
[CompassUSFSP](https://www.facebook.com/CompassUSFSP)

[Join the St. Petersburg Family Facebook Group](#)

Follow us on Instagram:
[@compassusfsp](https://www.instagram.com/compassusfsp)



The Network

The Network consists of a variety of interest groups that your student can join to make connections with other students who share that interest, hobby, or passion. Each Network is led by Peer Coaches who will help your student connect with other new students!

Join the Network here:
bit.ly/jointhenetwork21

HOUSING REMINDERS

Does Your Student Need Housing?

There are still rooms available for summer and fall/spring! Your student can sign up on their [housing portal](#).

Don't Forget: Submit Your Student's ID Card Request!

Please remind your student to submit their student ID card request to get their student ID card printed. Their student ID is their front door key to the residence halls, and they will need to request it prior to their move-in date. Click [here](#) for [more info](#).

Immunization Forms Are Due

Be sure to submit immunization forms on [our website](#).

Sign Up for an Appointment for Fall Housing Move-In!

Appointments are available Wednesday, 8/18, Thursday, 8/19, and Friday, 8/20. Appointments are by the hour starting at 9:00 AM and ending at 4:00 PM.

You can sign up for an appointment in the [housing portal](#).

The hour-long appointment time is not a time limit for move in; it is a designated arrival time to complete the check-in process of receiving your keys, activating your student ID card for your residence hall, and completing the administrative side of move-in. You can take as long as you need to actually move your items into your new room.

[Click here](#) for additional move-in information!

HELPFUL LINKS

New Student Resources

As your student transitions to the University of South Florida St. Petersburg campus, we know there will be a lot of questions and uncertainty. Below are a few resources that will help guide you and your student through this transition.

Success
Tips

Student Success
Center

Academic Advising &
Advocacy

Connect with Your Peer
Coach

Coronavirus USF
FAQ

Have a Question?

IMPORTANT DATES: SUMMER B

June 28: Summer Session B first day of classes

July 2: Summer Session B fee liability/tuition payment deadline

July 2: Summer Session B end of drop/add

July 2: Summer Session B last day to drop without fee liability

July 5: Independence Day holiday (observed); no classes & USF offices closed

July 19: Midterm grading opens Summer Session B

July 27: Midterm grading closes Summer Session B

July 30: Summer Session B last day to withdraw; no refund & no academic penalty

August 6: Summer Session B classes end; summer end of term

August 10: Final grading closes for Summer B

