



THE COMPASS CHRONICLE

THE OFFICIAL NEWSLETTER FOR USF ST. PETERSBURG CAMPUS
FAMILY MEMBERS AND FRIENDS



Week of Welcome

[Click here to Register!](#)

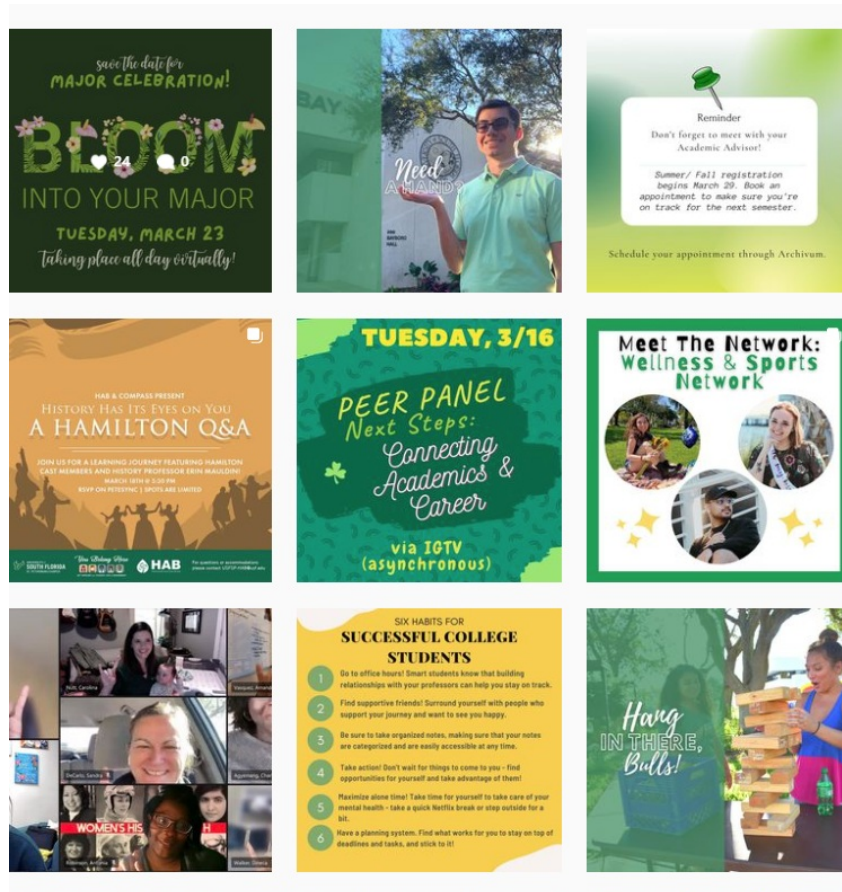
We are proud to announce the return of on-campus Family & Friends Weekend, November 5 – 7, 2021! Our One-USF Team invites you to reconnect with your student while making new memories during USF Homecoming. In addition to receiving your exclusive Family & Friends Weekend bag and t-shirt, you'll have the opportunity to explore planned and self-guided experiences and register for exclusive add-on experiences at discounted rates—including the USF Homecoming football game!



Has your student encountered a challenge and do they need help navigating a USF process, policy, or procedure? Is your student struggling and you need to connect them to support they need? Want the most accurate information to empower your student to overcome an obstacle?

[Fill out our Family Coaching Form](#) so you can receive direct follow up from your family coach.

Are you concerned that your student is experiencing personal, emotional, or behavioral distress? If so, we encourage you to learn more about USF Student Outreach and Support and submit a [referral form](#).



Follow Us on Social Media for Updates!

Follow us on Facebook:
[CompassUSFSP](#)

[Join the St. Petersburg Family Facebook Group](#)

Follow us on Instagram:
[@compassusfsp](#)

USF NEWS



U.S. News and World Report ranks USF as America's fastest-rising university, inside the top 50

The University of South Florida is the fastest-rising university in America over the past decade, public or private, according to U.S. News and World Report (U.S. News) 2022 Best Colleges rankings released today. For the third consecutive year, USF ranks as one of the nation's top 50 public universities. Over the past 10 years, USF has risen 48 spots among public universities from No. 94 to No. 46, and 67 spots among all universities (public or private), from No. 170 to No. 103, which represents a greater climb than any other university in the country.



USF Presidential Search Committee holds its first meeting

The University of South Florida Presidential Search Committee has met for the first time. It was an introductory meeting for the **15-member committee**, which included an overview of the search process and an initial discussion with the search firm, SP&A Executive Search. The meeting took place in the University Student Center Ballroom on the USF St. Petersburg campus.

HELPFUL LINKS

New Student Resources

As your student transitions to the University of South Florida St. Petersburg campus, we know there will be a lot of questions and uncertainty. Below are a few resources that will help guide you and your student through this transition.

Success
Tips

Student Success
Center

Academic Advising &
Advocacy

Connect with a Peer
Coach

Coronavirus USF
FAQ

Wellness Center

IMPORTANT DATES: FALL

October 4: Midterm grading opens

October 19: Midterm grading closes

October 30: Last day to withdraw; no refund & no academic penalty

November 11: Veterans Day holiday; no classes & USF offices closed

November 25 & 26: Thanksgiving holiday; no classes & USF offices closed

November 27 - December 3: Test Free Week

