

Fishery Applications of GIS I

Course Topics

Fish Density Mapping, Biomass, Species Distribution, Suitable Location for Marine protection Zone, Mapping/Modeling CPU, Benthic Habitat Modeler, Correlation with Environmental Variables, Interpolating Point Data & more!!

TOPICS COVERED

Introduction to ArcMap, ArcToolbox, and ArcCatalog

- Introduction to Arc Catalog
- Introduction to Viewing Data in ArcMap
- Using ArcToolbox
- Introduction to GIS Exercise

Manipulating Display Parameters in ArcMap

- Changing Simple Feature Symbology
- Labeling Features and Adding Text to Features
- Changing a Features Symbology Using Categorical Attributes
- Changing Raster Symbology
- Displaying Quantitative Data

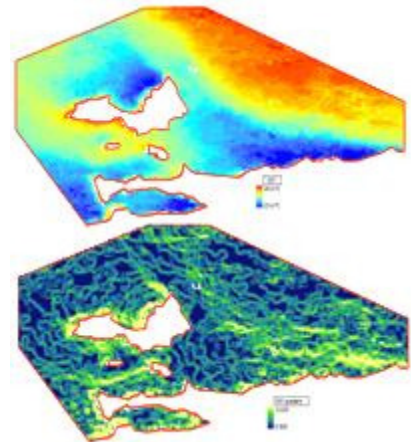
Map Making and Printing Maps Using ArcGIS

- Use a Map Template to Create a Map
- Creating Maps without Using a Template

Analyzing & Reporting Spatial Data

Querying and Preparing Data in ArcMap

- Selecting Feature by Attribute
- Selecting Features by Location
- Clipping Features
- Projecting and Defining the Coordinate System or Spatial Reference



Advanced Spatial Analysis

Suitable Location for Marine Protection Area

- Dissolving Features
- Creating Graphs
- Exporting Data
- Buffering Features
- Overlaying Layers

Correlation with Environmental Variables

- Creation of Sea Surface Temperature Gradient
- Fish Abundance Mapping
- Zonal Statistics
- Integration in Excel for Statistical Analysis

Contact Us

Dr. Barnali Dixon / Julie Earls
140 7th Ave. South
(Geo-Spatial Analytics Lab –Dav206)
University of South Florida St. Petersburg
St. Petersburg, FL 33701
Phone (727) 873-4025
E-mail: [Barnali Dixon](mailto:bdixon@mail.usf.edu) bdixon@mail.usf.edu