



# iCAR

THE INITIATIVE ON COASTAL ADAPTATION AND RESILIENCE

## ICAR & Storm Squad Townhall

Saturday, April 6<sup>th</sup> Townhall Meeting

G-SAL Lab



UNIVERSITY of  
**SOUTH FLORIDA**  
ST. PETERSBURG

# Our Mission

- Use research and education to provide the understanding and ideas needed to make critical decisions regarding our changing and vulnerable coasts
- Engaging stakeholders to facilitate adoption of policies and practices focused on coastal adaptation and resilience
- This transdisciplinary initiative includes the science, engineering, policy and social sciences and will examine the interactions between climate change, water systems, land use, the built environment and ecosystem functions.

# Engaging With The Community

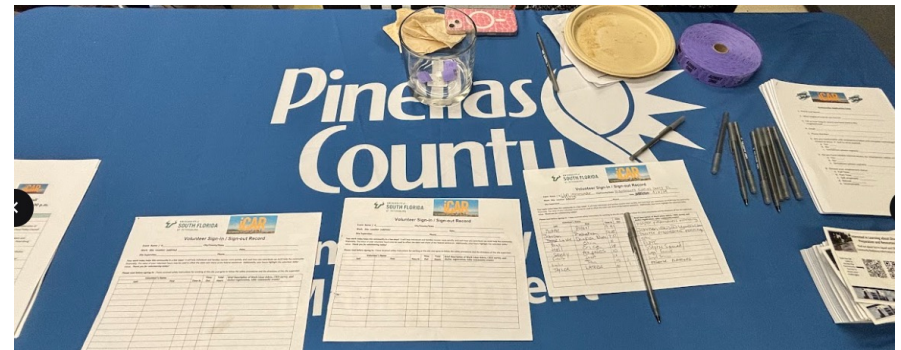
- The most recent community outreach and educational program was held locally at the Enoch Davis Center on Saturday April 6<sup>th</sup>, 2024.
- With our sponsors and partners such but not limited to FEMA, SCEN, FLPC... This provided a safe space for individuals who wanted to share personal experiences and major community concerns.



# Welcome & Registration



- At 10:00 A.M: Local residents of the neighboring communities gathered for provided coffee and pastries after signing in for the event





# Itinerary

## Welcome and Introduction:

- Erica Hall, Executive Director, Community Collaborative of Florida and Executive Director of Florida Food and Policy Council
- Brief overview on Community Meeting Itinerary



# Update on Storm Squad

- Dr. Barnali Dixon, initiative on Coastal Adaptation and Resilience (iCAR), University of South Florida St. Petersburg (Geospatial Analytics Laboratory)
- Reviews and updates research data for local area and the importance of community participation



# St. Petersburg Free Clinic

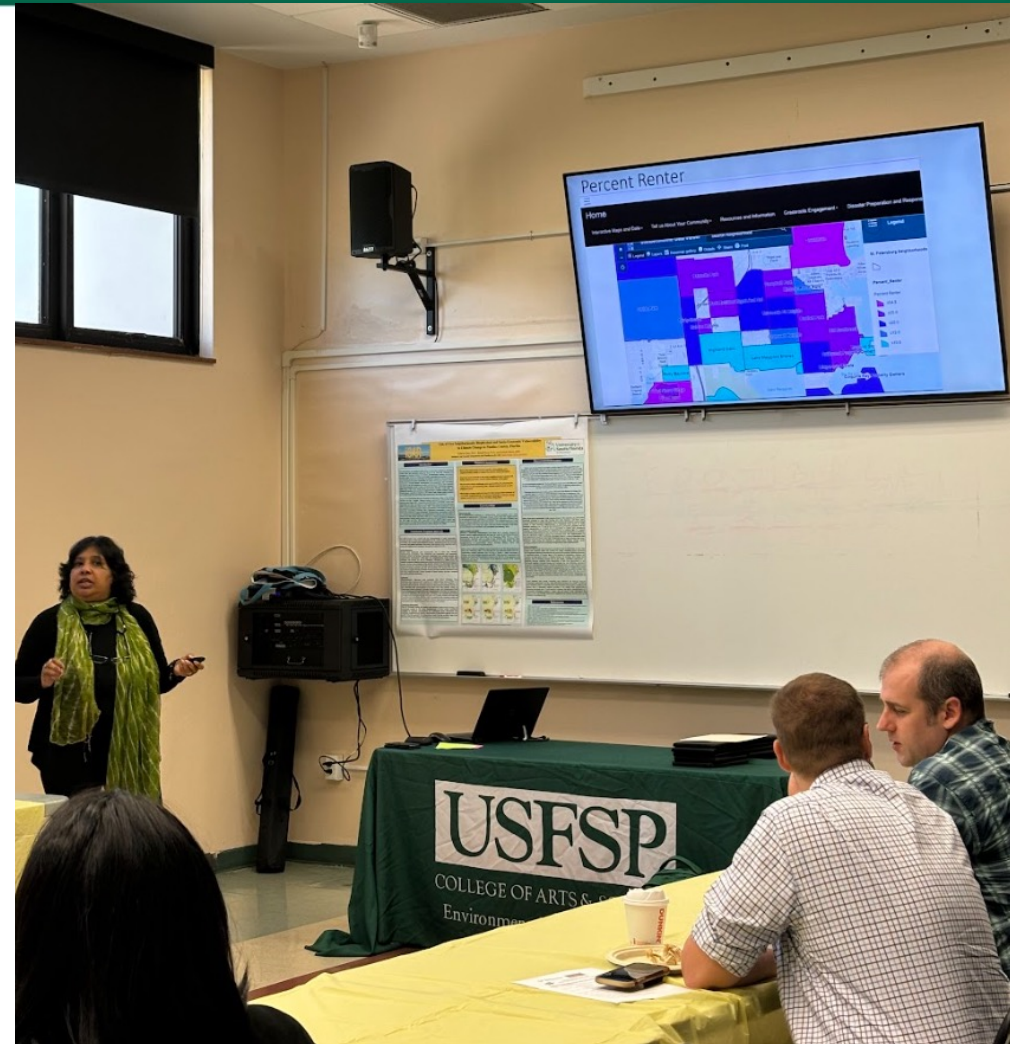
- Fresh PACE Healthy Neighborhood Store Program- Shaina Bent Chief Executive Officer
- Residential Programs- Dr. La'Toya Worlds, Bells, Director



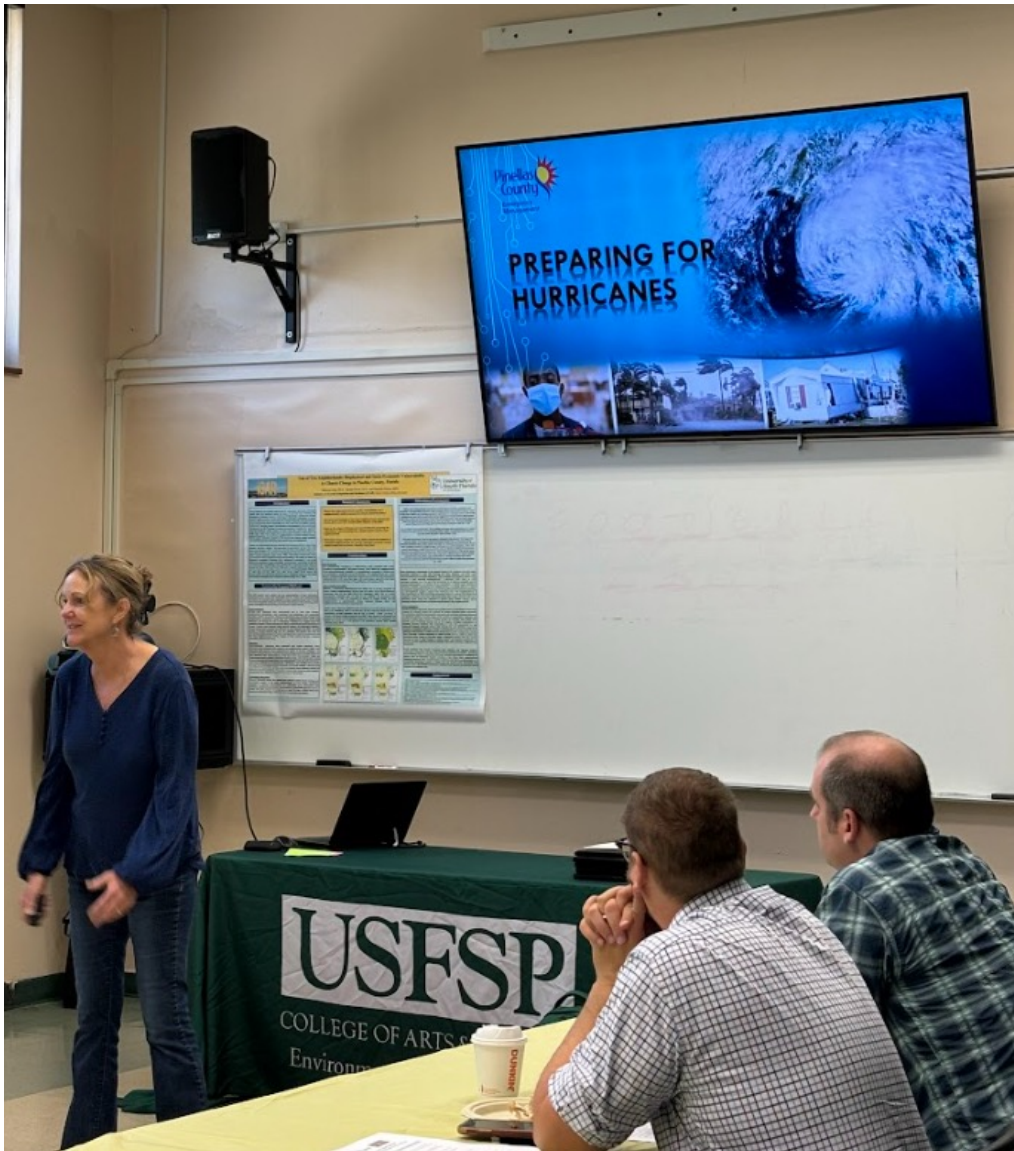


## CRIS Survey Overview and Feedback

- Dr. Barnali Dixon shares updated data for imperative research areas via graphs and models
- Intentions of data analysis, community outreach, and further goals to better the local community





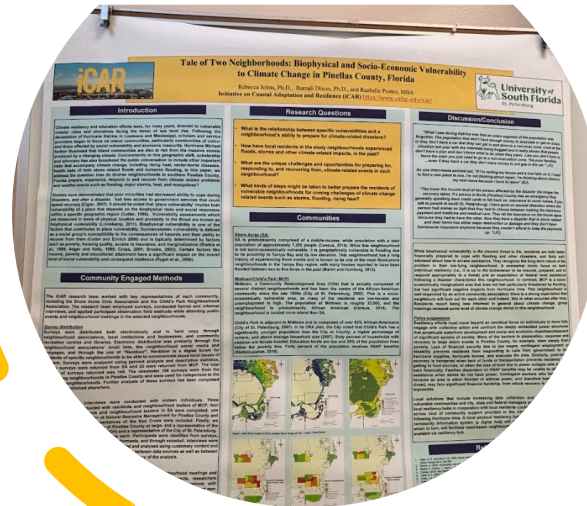


## Preparing for Hurricane Season

- Mary Burrell, Whole Community Engagement Program Lead, Pinellas County Emergency Management
- Sharing resources, preparation tactics, and timelines to better ensure safety for future possibilities of natural disasters (hurricanes)

# Discussion

- Opened discussion and conversation between community members and professions to express questions, concerns, challenges, and possible solutions to preparing for Hurricane Season
- Shared recent Research Posters





# Lunch

- Attending community members enjoyed provided lunch
- Fruit, Jimmy Johns sandwiches, drinks, snacks and more
- Attendees also had this opportunity to connect with other community members present and have one-on-one conversations with professionals presenting at the event
  - Ask questions and more





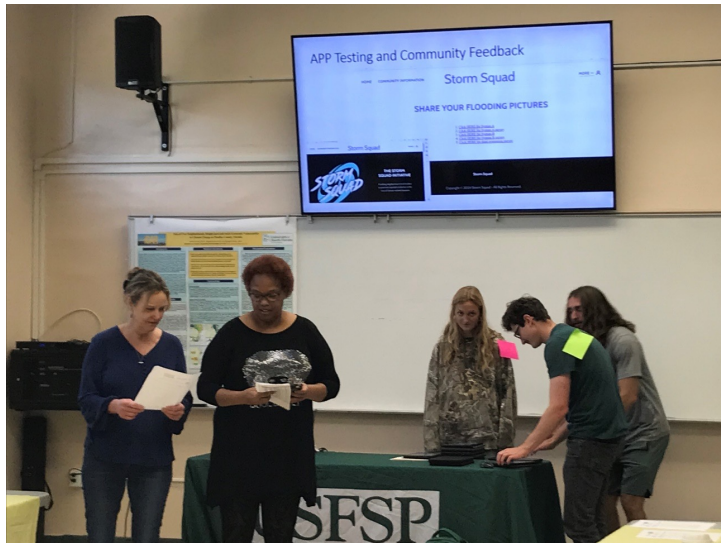


## Community Resource After Disaster

---

- FEMA Volunteer Agency Liaison
- Bay Area Legal Services
  - Jason Susalla, Managing Attorney, Disaster Relief Team
  - Providing further legal rights of residence in case of an emergency
  - Further resources, phone numbers and contacts

# Testing of APP for Flood Reporting





## Closing & Recognition of Ambassadors and CERT Members

- Raffle drawings
- Gift Certificates for our two ambassadors
- Survey feedback on new CRIS applications
  - Problem Reporting Needs Evacuation Program



**Barnali Dixon, Ph. D**  
**Professor, School of**  
**Geosciences**  
**Director of Geo-Spatial**  
**Analytics Lab**

**[bdixon@usf.edu](mailto:bdixon@usf.edu)**

**Associate Editor, Journal of the American**  
**Water Resource Association (JAWRA)**

**PRW 118N, University of South**  
**Florida 140 Seventh Ave South,**  
**St. Petersburg FL 33701**

